

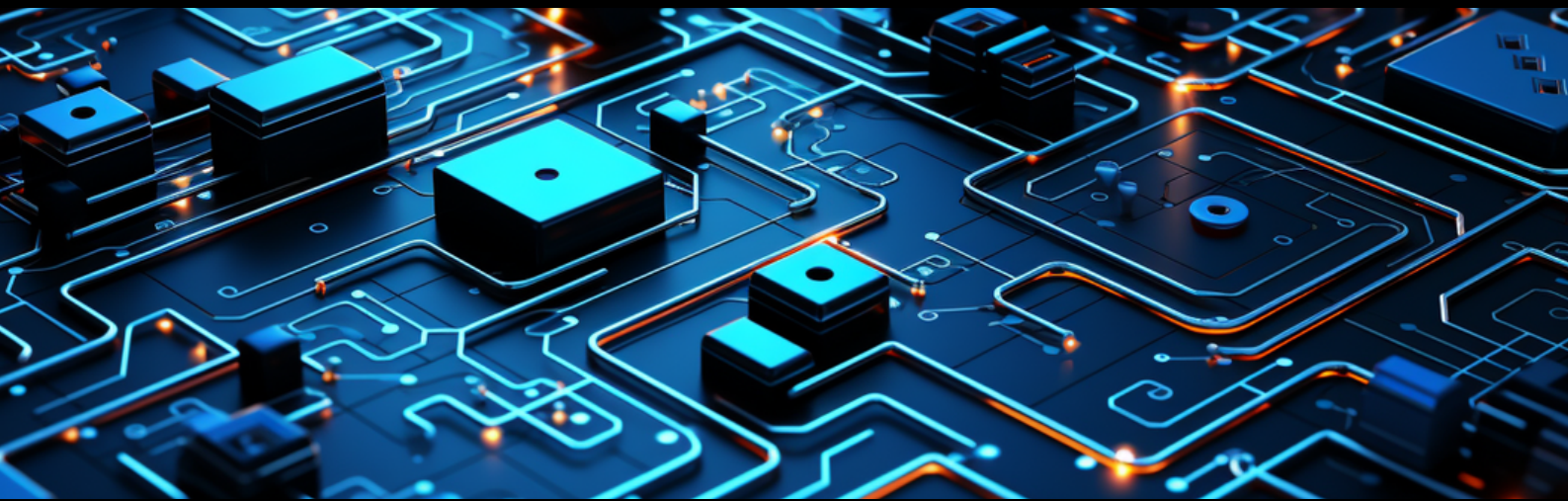
Protect //



murdoch  
webster

# Cloud XDR & SIEM

## A Strong Security Posture, Proactive Threat Intelligence



Adaptive Cybersecurity / Next-Gen Expertise / Proactive Partnerships

### Leading with Intelligent Threat Detection & Response

Rapid7's Insight Platform incorporates advanced threat intelligence and proactive remediation strategies. Rapid7 equips businesses with the tools to stay ahead of evolving cyber threats. From cloud security to vulnerability management, their solutions are tailored to address the full spectrum of cyber risks.

### Business Benefits

**Enhanced Security Posture:** Safeguard your business and data from complex cyber threats.

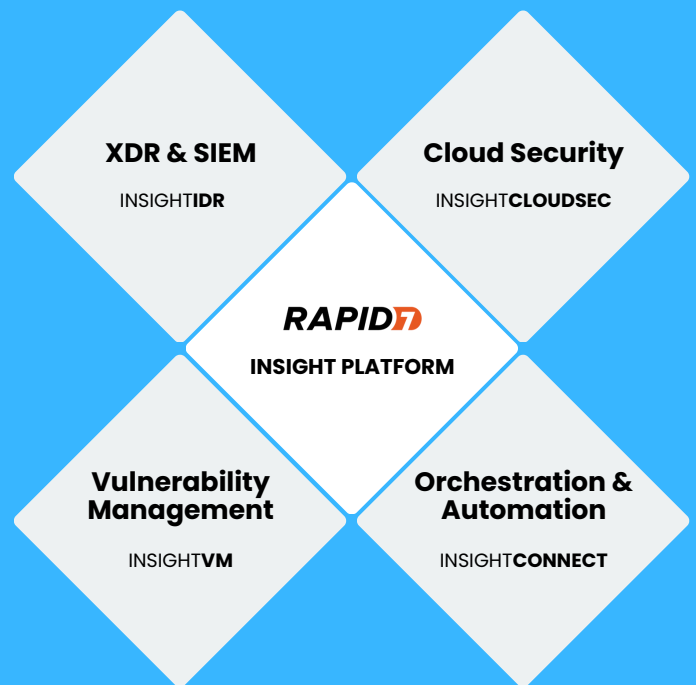
**Increase Efficiency:** Simplify routine tasks with automation to focus your team on high-impact work.

**Improved Compliance:** Shield your business from compliance penalties by handling regulations and minimising risk.

**Bolster Customer Confidence:** Enhance your business's reputation with a secure and reliable environment.

## Rapid7 Insight Platform Highlights

- **Adaptive Threat Protection:** Utilizing InsightIDR's advanced detection and response capabilities, businesses can adaptively counteract emerging cyber threats, ensuring proactive defense in an evolving threat landscape.
- **Enhanced Visibility:** InsightVM offers comprehensive vulnerability management, while InsightCloudSec ensures cloud and container security, providing deep visibility and real-time monitoring across all environments.
- **Streamlined Compliance:** Rapid7's InsightCloudSec automates compliance and simplifies risk management, crucial for maintaining integrity under changing regulations and complex cloud environments.
- **Efficient Workflow Automation:** InsightConnect streamlines security processes, automating repetitive tasks and integrating seamlessly with existing tech stacks, thereby boosting operational efficiency and allowing teams to focus on strategic growth and cybersecurity resilience.



### How can Murdoch Webster help?

**Expertise & Guidance:** Our team of certified experts can provide guidance on best practices implementing threat awareness programs.

**Comprehensive Coverage:** We cover all aspects of threat awareness needs with a modern, best-of-breed focus on cyber compliance.

**Flexibility & Scalability:** We right-size your threat awareness strategy to scale as your business grows.

We partner with

**RAPID7**

### Getting started

Let's explore the journey of advancing Intelligence-Driven Defense within your business today.



+61 3 9095 8031  
sales@mwtg.com.au



mwtg.com.au